

TECHNICAL BULLETIN 53

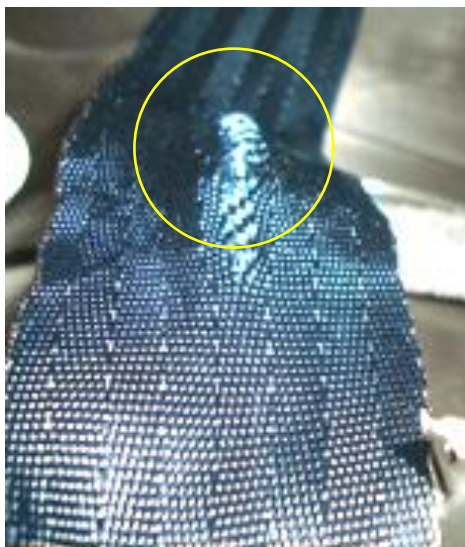
PASSENGER VEHICLE CHILD SEAT REPLACEMENT

JULY 2013

In the event of a vehicle collision, it is possible that a child seat or child capsule may be damaged and should be replaced. Although there are no laws or regulations relating to replacement conditions, child seat manufacturers and state roads authorities have published guidelines for replacement conditions. Child seats do not automatically need to be replaced after a vehicle collision. Suggested guidelines for replacement, following an inspection, are;

- Webbing/straps snapping or showing visible signs of tearing or fraying
- Seat body cracking or showing crazing or discolouration of plastic. Pay special attention to anchor points, webbing terminals and where webbing wraps through or around the body
- If an airbag was deployed in the collision which would be an indication of collision severity and potential vehicle structural damage.

These criteria relate to all types of child seat including baby capsules, child/toddler seats and harnesses, and booster seats.



Look for damage to webbing



Look for damage to plastic seat body, especially where the straps pass through

Disclaimer:

The information contained herein is for general information purposes only. Users should be aware that (to the maximum permitted by law) we accept no responsibility for the accuracy or completeness of any material contained herein and exclude all liability to any person arising directly or indirectly from using the information or material. We recommend users confirm the accuracy and appropriateness of the information from another source if necessary, and to exercise their own skill and care with respect to its use.

Copyright

Copyright © 2007 Insurance Australia Limited ABN 11 000 016 722. All content included herein, such as text, documents, graphics, logos and images are the property of Insurance Australia Limited or its content suppliers and protected by Australian copyright laws. Third party copyright and trade marks appearing herein are reproduced with permission. No part of the content may be reproduced, transmitted, distributed, commercialised or re-used for any purpose whatsoever without written permission of Insurance Australia Limited (contact IAG Research Centre for more information).

Insurance Australia Limited

ABN 11 000 016 722

AFS Licence No. 227681

IAG Research Centre

Unit One/ No. 2 Holker Street

Newington NSW 2127 Australia

T +61 (0)2 9292 6840

F +61 (0)2 9737 9860

E research.centre@iag.com.au

W www.iagresearch.com.au